

# Digital Age Networking

For more information, visit:  
[www.al-enterprise.com](http://www.al-enterprise.com)

Alcatel•Lucent  
Enterprise



OmniAccess®  
Stellar

## Wi-Fi 7 Indoor OmniAccess Stellar 1521

### Indoor mid-range Wi-Fi 7 access point

- 12.2 Gbps • 1536 clients • 36 SSID
- Tri Radio, 6 GHz 2x2:2, 5 GHz 4x4:4 and 2.4 GHz 2x2:2
- USB-C • Scanning radio • USB 2.0
- 1x10GbE + 1x1GbE • MLO • 320MHz
- 4K-QAM • DL and UL MU-MIMO
- WPA3 • Temp: 0°C to 50°C
- BLE/Zigbee integrated • TPM 2.0
- PoE powered 802.3at/bt
- Retrocompatible with previous standards



## Wi-Fi 7 Indoor OmniAccess Stellar 1511

### Indoor entry range premium Wi-Fi 7 access point

- 9.328 Gbps • 768 clients • 36 SSID
- Tri Radio, 6 GHz 2x2:2, 5 GHz 2x2:2 and 2.4 GHz 2x2:2
- USB-C • USB 2.0 • 1x 5GbE • MLO
- 320MHz • DL and UL MU-MIMO
- WPA3 • Temp: 0°C to 50°C
- BLE/Zigbee integrated
- TPM 2.0 • PoE powered 802.3at
- Retrocompatible with previous standards



## Wi-Fi 6E Indoor OmniAccess Stellar 1451

### Indoor high-end premium Wi-Fi 6E access point for increasing IoT needs

- 10 Gbps • 1536 clients • 48 SSID
- Tri radio 2.4GHz 4x4, 5GHz 8x8 & 6GHz 4x4
- Scanning radio • USB 3.0 • 10GE+10GE
- DL and UL MU-MIMO • WPA3
- Target Wake Time • Temp: 0°C to 45°C
- Max power: 49W
- Retrocompatible with previous standards
- PoE powered 802.3bt
- BLE/Zigbee integrated



## Wi-Fi 6E Indoor OmniAccess Stellar 1431

### Indoor premium Wi-Fi 6E access point that provides high-efficiency and high-performance for high client density environments.

- 4.2 Gbps • 512 clients • 16 SSID
- Tri Radio, 6 GHz 2x2:2, 5 GHz 2x2:2 and 2.4 GHz 2x2:2 • Max power: 34W
- USB 3.0 • 2.5GE + 2.5GE • DL and UL MU-MIMO
- WPA3 • Target Wake Time Temp: 0°C to 45°C
- Retrocompatible with previous standards
- PoE powered 802.3bt • BLE/Zigbee integrated



## Wi-Fi 6E Indoor OmniAccess Stellar 1411

### Indoor premium Wi-Fi 6E access point that delivers excellent connectivity, coverage and performance.

- 3.6 Gbps • 512 clients • 16 SSID
- Dual Radio: 2.4GHz 2x2+5GHz 2x2 or 2.4GHz 2x2+6GHz 2x2 or 5GHz 2x2+6GHz 2x2
- USB 3.0 • 2.5GE + 2.5GE
- DL and UL MU-MIMO • WPA3 • Target Wake Time
- Temp: 0°C to 45°C • Max power: 25W
- Retrocompatible with previous standards
- PoE powered 802.3bt
- BLE/Zigbee integrated



## Wi-Fi 6 Outdoor OmniAccess Stellar 1360

### Ruggedized Wi-Fi 6 access point for outdoor high-density environments

- 3 Gbps • 1024 clients • 16 SSID
- 2.23 Kg • DPI • IP67 rated
- 4 radios • 1 dedicated to scanning
- DL and UL MU-MIMO
- WPA3 • Target Wake Time
- Temp: -40°C to 65°C
- Retrocompatible with previous standards
- Max power: 70W
- PoE powered 802.3bt/at
- BLE integrated



## Wi-Fi 6 Indoor OmniAccess Stellar 1351

### Outstanding bandwidth and speed for very demanding environments

- 10 Gbps • 1536 clients • 24 SSID • 1200 g
- DPI • WPA3 • Tri radio 2.4GHz and Dual 5GHz
- 1 radio dedicated to scanning
- DL and UL MU-MIMO • Target Wake Time
- Temp: 0°C to 45°C • Max power: 60W
- Retrocompatible with previous standards
- PoE powered 802.3bt • BLE/Zigbee integrated



## Wi-Fi 6 Indoor OmniAccess Stellar 1331

### Wi-Fi 6 premium mid-range access point for larger enterprises with intensive Wi-Fi usage

- 3, 55 Gbps • 1024 clients • 32 SSID • TWT
- 985 g • DPI • Dual Radio DL & UL MU-MIMO
- 1 radio dedicated to scanning • Temp: 0°C to 45°C
- PoE powered 802.3bt/at • BLE/Zigbee integrated
- Retrocompatible with previous standards
- Max power: 23W



## Wi-Fi 6 Indoor OmniAccess Stellar 1320

### Wi-Fi 6 access point for indoor high-density environments

- 3 Gbps • 1024 clients • 32 SSID
- 700 g • DPI • UL2043
- 4 radios • 1 dedicated to scanning
- WPA3 • DL and UL MU-MIMO
- Target Wake Time • Temp: 0°C to 50°C
- Retrocompatible with previous standards
- Max power: 18W • PoE powered 802.3/at
- BLE integrated



## Wi-Fi 6 Indoor OmniAccess Stellar 1311

### Wi-Fi 6 premium entry-level for indoor; cost-effective and versatile for all type of enterprises

- 1.77 Gbps • 512 clients • 16 SSID • 582 g
- DPI • 4 radios • 1 dedicated to scanning
- WPA3 • DL and UL MU-MIMO
- Target Wake Time • Temp: 0°C to 45°C
- Retrocompatible with previous standards
- Max power: 19.1 W • PoE powered
- 802.3af/at • BLE integrated



## Wi-Fi 6 Indoor OmniAccess Stellar 1301

### Wi-Fi 6 access point, basic entry-level for indoor; ideal for small and medium enterprises

- 1.77 Gbps • 512 clients • 16 SSID
- 574 g • DPI • Dual radio • WPA3
- DL and UL MU-MIMO
- Target Wake Time • Temp: 0°C to 45°C
- Retrocompatible with previous standards
- Max power: 13.1 W
- PoE powered 802.3af



## Wi-Fi 6 Indoor OmniAccess Stellar 1301H

### Wi-Fi 6 indoor designed for vertical industries and teleworkers

- 1.77 Gbps • 1024 clients • 32 SSID
- 320 g • DPI • Dual Radio • WPA3
- DL & UL MU-MIMO • TWT
- Temp: 0°C to 45°C
- Max power: 12.7 W
- PoE powered 802.3at/af
- BLE/Zigbee integrated
- Retrocompatible with previous standards



OmniSwitch®

## Premium access OmniSwitch 6870

### Advanced 24/48 ports 1G/Multi-gig and 25G switches for campus and Data Center networking

- All Multi-gig ports on PoE models, comprehensive 2.5G/5G/10G models to select
- 802.3bt PoE up to 95W per port and 3.3 kW PoE budget • Flexible PSU Load-Sharing PoE
- PoE and non-PoE models can stack together • Various uplink speed up to 200G
- OmniFabric ready • 256-bit MACsec on all ports • Telemetry • SPB • VxLAN
- Virtual chassis • QoS • IPv4/v6 • VRF • Advanced routing • Multicast • UNP



## Premium access OmniSwitch 6860N

### Advanced 24/48 ports 1G/Multigig switch for campus and Data Center networking

- PoE+ and non-PoE models • Up to 95W PoE and 3.4 kW PoE budget
- VxLAN • SPB • iFab • Virtual chassis • Automatic VLAN
- Context-based QoS • JTIC • IPv4/v6 • FIPS • VRF • Advanced routing
- Multicast • EAL-2/NDcPP • UNP • Smart analytics
- Application analytics • MACsec encryption



## Advanced access OmniSwitch 6570M

### Advanced 12/28 ports 1G/10G switch for Enterprise and Service Provider Networks

- Metro Ethernet Services enabled • Virtual chassis
- Automatic VLAN • Advanced QoS • IPv4/v6
- Static/Dynamic routing • Multicast • UNP
- EAL-2/NDcPP • CE 3.0 certified
- MACsec encryption



## Advanced access OmniSwitch 6560/E

### Cost-effective Layer 3 24/48 ports Multigig access switch for large IoT-based and Wi-Fi 6/7 networks

- 802.3bt PoE • PoE+ and non-PoE models • 2x20G virtual chassis ports
- Fiber SFP+ ports • Modular load-sharing power supplies • Up to 95W/port
- IoT profiling enablement • Advanced QoS • IPv4/v6 • Static/Dynamic routing
- UNP • MACsec encryption • Automatic VLAN • Context-based QoS
- Virtual chassis



## Value access OmniSwitch 6360

### Advanced Layer 2+ 10/24/48 ports 1Gb for classroom, campus and small/branch enterprise

- PoE+ and non-PoE models • 10G SFP+ uplinks
- Static IPv4/v6 routing • UNP • Fiber SFP Ports
- IoT enablement • Fanless (10/24 ports) • Virtual Chassis
- Perpetual/Fast PoE • Multigig/HPoE on P48X model



## Ruggedized OmniSwitch 6865

### Advanced Layer 3 fanless Ethernet switches designed to operate in the harshest industrial environments

- PoE+ and non-PoE models • SFP+ uplinks • SPB Virtual chassis
- Temp: -40° C to 75° C • EAL-2/NDcPP • Advanced stacking and routing
- VRF • Multicast • IPv4/v6 • JTIC • UNP • Automatic VLAN
- Advanced L3 • Fast / Perpetual • High surge tolerance • 802.3bt PoE
- HPoE up to 75W/port • IoT enablement • FIPS 140-2 • iFab
- Certified for: DNV MIL Railway Electric substation TAA NEMA-TS2



## Ruggedized and high-temperature OmniSwitch 6465/6465T

### Compact hardened fanless 6/12/28 ports Gigabit Ethernet switches for industrial applications

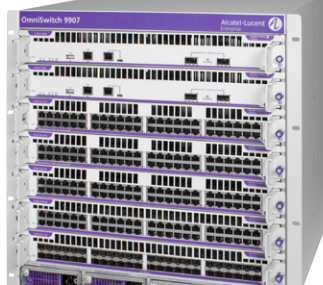
- PoE+ and non-PoE models • 802.3bt PoE
- HPoE up to 60W/port • Instant/continuous PoE
- Network automation • Virtual chassis • High surge tolerance
- DIN mountable • MACsec encryption • Zero touch provisioning
- IoT enablement • Support IEEE 1588v2 PTP • Disaster recovery
- Extended temperature ruggedized



## Modular core switch OmniSwitch 9900

### High-density chassis for core campus and Data Center networks

- 7 Slot modular chassis • 25.6 Tb/s aggregated switching capacity (with two OS9907-CFM2) • Up to 10,800W of PoE budget
- Virtual chassis • VRF • Advanced routing • MACsec
- Multicast • IPv4/v6 • FIPS 140-2 Core network and DC Fabric at 1G/10G/25G/40G/100G
- Programmability: Python, RESTful API, OpenStack
- EAL-2/NDcPP • JTIC • SPB • UNP



## Stackable core switch OmniSwitch 6900

### High-performance switch for core campus and Data Center networks

- 1U switches
- Multiple fixed configurations of 1/10/25/40/100G ports
- Virtual chassis • Advanced routing • VRF • Multicast
- IPv4/v6 • JTIC • ISSU • SPB • UNP
- Programmability: SDN, OVSDB, OpenStack, Python, Rest API, SSH
- FIPS 140-2 • EAL-2/NDcPP • MACsec



## SMB and Websmart access OmniSwitch 2260/2360

### Cost Effective 8/24/48 ports stackable, websmart Gigabit Ethernet Switch

- Virtual chassis • Standalone
- PoE+ and non-PoE models
- Static IPv4/v6 routing • Fiber SFP Ports
- Fanless (10/P10/24 ports)
- Perpetual/Fast PoE • 802.1X/MAC Auth
- Advanced QoS and ACLs
- 10G SFP+ uplinks on "X" models

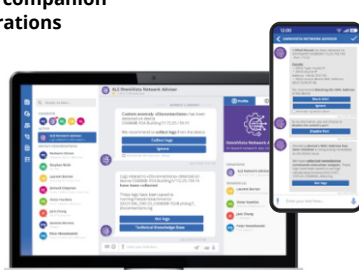


Network  
Management and  
Cybersecurity

## Alcatel-Lucent OmniVista® Network Advisor

### Network Advisor is an AI-powered IT companion that eases network teams' daily operations

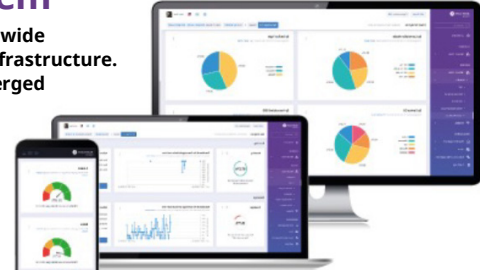
- Detect network issues
- Simplify troubleshooting
- Accelerate security threat detection, reaction & mitigation
- Benchmark network performance
- Get alerts on possible provisioning errors and proposal on corrections
- Get a comprehensive picture of the health of the network



## Alcatel-Lucent OmniVista® 2500 Network Management System

### Unified management and network-wide visibility for your LAN and WLAN infrastructure. Includes a full set of tools for converged campus networks and datacenters

- Automated reporting
- Full HTML 5 web-based client
- Monitor and manage end-to-end LAN and WLAN infrastructures



## Alcatel-Lucent OmniVista® Cirrus Network Management

### Cloud-based network management for LAN and WLAN

- Web-based user interface
- Advanced BYOD
- Multi-tenant support
- Multi-customer management
- Subscription-based offer
- IoT visibility and inventory
- Lifecycle management



Plugin Video  
Management  
Systems

## OmniSwitch VMS Plugin for Milestone solutions

### Boost operational efficiency and improve video surveillance infrastructure security.

- It allows users to create, modify, and delete ALE switches connected to cameras managed by the VMS
- Up to 70% of camera problems can be resolved remotely by the VMS operator
- Enhances the efficiency and responsiveness of the camera management system
- Enables you to view cameras connected to the switchboards and provide real-time status of the switches and ports
- Allows resetting of a camera and locking the MAC address to a port directly from the smart client



Asset Tracking

## OmniAccess® Stellar Asset Tracking

### It provides smart connection to assets, so you can locate equipment and people in real-time, optimizing operations and reducing costs.

- Real-time location & geofencing
- Asset tracking & asset management
- Automated & push button security alerts
- Contact tracing & contact history
- People location & people flow
- Equipment maintenance scheduling
- Workflow optimization
- API's for 3rd party integration



Network as a Service

## Network as a Service by Alcatel-Lucent Enterprise

### It is a new way for businesses to purchase network infrastructure—hardware, licenses, applications, and management tools—with agile life cycle services through subscriptions. This is a modular offer to meet your business needs.

- Reduce time to benefit
- Quickly adapt to business needs
- Maximum agility and scalability
- Free up IT Staff with improved network operations
- Predictable costs for your network infrastructure
- All-inclusive Support Offer



Network  
Products  
Communications  
Products

Alcatel•Lucent  
Enterprise