



Digital transformation for SMBs

Simple network solutions to propel small and mid-sized businesses into the digital era

The right solutions for your digital transformation

Small and mid-sized businesses (SMBs) like yours need simple, affordable, smart network infrastructure and communications solutions. Alcatel-Lucent Enterprise addresses this market with a comprehensive, high-performance solution networking as well as IP telephony and collaboration. The ALE network solution for SMBs is simple, cost-effective and secure.

At ALE, we believe that the most revolutionary technology doesn't have to be complex or expensive; it just needs to be tailored to the needs of SMBs. We provide a complete SMB network solution encompassing your local area network (**LAN**), **wireless LAN**, also known as your Wi-Fi infrastructure, and **network management**. The solution provides a solid foundation to support business communications, applications, users and devices.

Based on a high-performance enterprise-grade network, the SMB network solution ensures high-availability, security and scalability to address future growth.

LAN infrastructure

On the LAN side, we offer a suite of switches to address any of your needs, whether for a pure standalone network, branch offices or enterprise edge network. Our [Alcatel-Lucent OmniSwitch® 2260, 2360, 6360 and 6560](#) are the most ideal switches for SMBs. They provide enhanced

VoIP and video performance as well as these benefits:

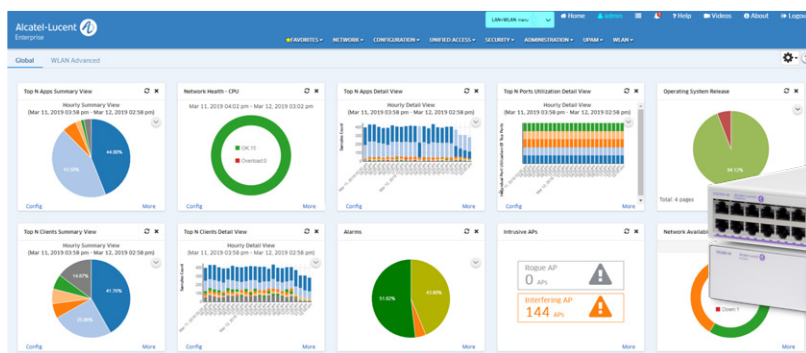
- IT simplicity for easy, reliable and secure deployment
- Optimised Power over Ethernet (PoE)/PoE+ budget for IP phones, WLAN access points and video cameras (among others) to reduce investments
- LAN and WLAN unified management to set the best quality of service

WLAN infrastructure

ALE offers a wide range of Wi-Fi 6/6E and Wi-Fi 7 access points that provide versatility and operational simplicity.

[Alcatel-Lucent OmniAccess® Stellar access points](#) provide outstanding performance but are simple and cost effective to deploy and maintain. They operate in a secure (https) web-managed cluster architecture, allowing for a simplified plug-and-play deployment.

You can start with a standalone deployment with our Wi-Fi Express mode. In this mode, the OmniAccess Stellar access points belong to an AP group or cluster where one of the access points is designated as a virtual controller for the cluster. Up to 255 OmniAccess Stellar WLAN access points are supported per cluster. New access points can be added automatically and it's easy to set up and manage access privileges.



Based on a distributed intelligence architecture, OmniAccess Stellar access points eliminate the need for a costly centralized controller and make it easier to give you and your employees absolute freedom to be mobile.

Network management

Although all ALE switches and APs can be managed by just using HTTPS for basic networks, ALE also offers unified network management for LAN and WLAN, enabling a consistent experience and ultimate IT simplicity for deploying, operating and maintaining your network. The [Alcatel-Lucent OmniVista® Network Management System](#) gives you single-pane visibility of your entire network, including those in remote locations. This is available either on premises or in the cloud, providing deployment flexibility and simplicity.

IT simplicity

Pre-configured profiles of users and devices connecting to the enterprise network allow for zero-touch provisioning (ZTP) and deployment. ALE LAN and WLAN solution enables seamless and automatic onboarding of IoT devices for SMBs, including video surveillance cameras, alarms, printers, IP telephones, smart lighting, smart door locks, and access control systems. The process is fully automated and ensures that all devices are securely profiled, preventing them from becoming

potential back doors for hackers. With our technology, you can confidently scale your IoT infrastructure easily and securely.

Why choose Alcatel-Lucent Enterprise?

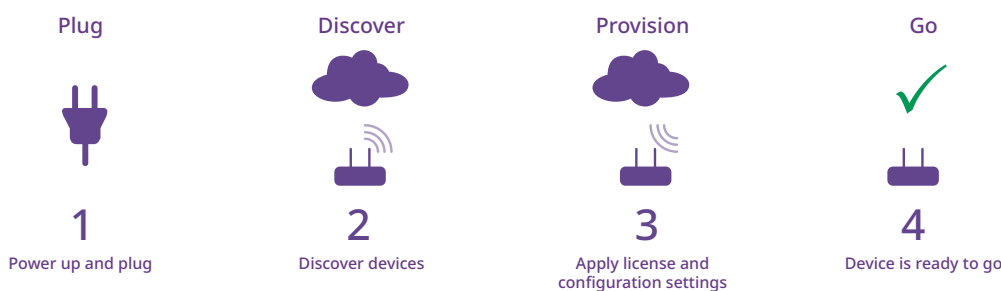
ALE offers SMBs an enterprise-grade, carrier-class LAN and WLAN solution without compromising performance, reliability, and security, while significantly lowering the total cost of ownership (TCO) of your network and communications infrastructure.

ALE solutions are simple to deploy, operate and maintain so you can move forward with digital transformation but still focus on the most important areas of your business.

ALE provides unified advanced LAN and WLAN remote management capabilities at any time, and from any location and device, making our solution ideal if you have limited IT resources.

ALE offers an end-to-end solution to address your data network, telephony and collaboration needs, enabling one-stop shopping and support. Our communications solution includes Alcatel-Lucent OXO Connect and Rainbow™ as well as a range of IP telephony products. The network and communications components provide a complete voice/data/Wi-Fi solution.

Zero-touch provisioning reduces manual errors and speeds time to deployment



To learn more about ALE's solutions for small and mid-sized businesses, please visit our website at www.al-enterprise.com/en/solutions/smb or [contact us](#).

