



Networks for Mid-Sized Businesses

High-performance AI-powered and automated networks with lower TCO



Overview

Growing a mid-sized business comes with its own IT hurdles — striking the right balance between ambition and available resources isn't easy.

Most mid-sized enterprises like yours seem to be facing similar challenges:

- **Budget constraints.** Limited IT budgets and difficulties investing in cutting-edge technologies or maintaining an in-house IT team. As a result, they are often forced to make trade-offs between operational needs and innovation.
- **Cybersecurity risks.** More susceptible to cyberattacks due to relatively weaker security, and a lack of a dedicated cybersecurity team or tools like 24/7 monitoring, threat detection and quick incident response. Due to resource constraints, they often struggle with regulatory compliance (such as GDPR, HIPAA and NIS 2).
- **Talent acquisition and retention.** Mid-sized enterprises have a harder time acquiring skilled IT professionals, and existing staff may wear multiple hats, leading to burnout and inefficiency.
- **Legacy systems and scalability.** Many mid-sized firms still rely on outdated systems that are hard to integrate and scale. Upgrading or migrating systems is expensive, risky and time-consuming. It is also difficult to predict and prepare IT capacity for future needs.

Alcatel-Lucent Enterprise can help you navigate these key IT challenges. For more than 25 years, ALE has designed network solutions trusted by [prestigious clients](#) across all industries around the world. They choose us for the following reasons:

- **Robustness:** Reliable and durable equipment designed for demanding environments
- **Simplicity and automation:** A complete high-quality LAN and WLAN portfolio with a unified management system enabling network automation
- **Security:** Equipment designed with security in mind from the start, and zero trust network access throughout
- **Optimized total cost of ownership (TCO):** No hidden fees, simple procurement, ease of learning and unified management
- **Flexibility:** On both deployment and purchasing options. You can choose to purchase equipment via Network as a Service (NaaS), and between cloud-based and on premises network management systems.
- **Proximity:** Local technical support and a dedicated sales and pre-sales team by your side
- **Sustainability commitment:** Reduced environmental footprint and optimized energy consumption

Meet the Alcatel-Lucent Enterprise network portfolio

At ALE, simplicity is key. We believe the easier it is to operate and manage a network, the more secure it will be. Simplicity reduces the potential for errors, which can leave areas vulnerable.

ALE provides organizations with a high-performance Autonomous Network that automatically provisions network services and automates mission-critical network operations while improving the user experience.

From the edge to the core, ALE has you covered.

Flexible and scalable next-gen switches

With their advanced features, the [Alcatel-Lucent Enterprise OmniSwitch family](#) offers scalability, seamless connectivity and robust security.

The ALE OmniSwitch takes simplicity to the next level with:

- **Built-in security** from the get-go with secure, diversified code
- Edge, hardened **core switches using the same secure level code**
- **Automatic IoT containment** with auto-configuration to reduce human errors

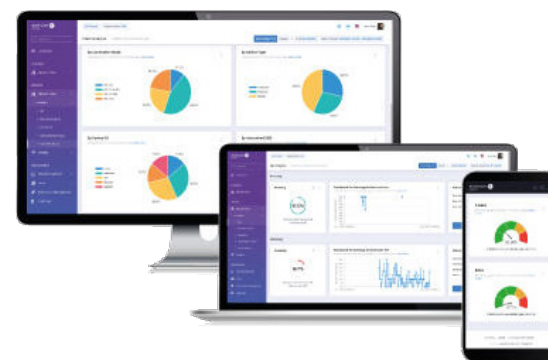
- **Zero trust** network architecture with micro and macro segmentation
- **Deep packet inspection** (DPI), essential for modern cybersecurity, traffic management and to ensure compliance in enterprise networks
- **Single management system**, unified for OmniSwitch & OmniAccess Stellar WLAN solutions for complete network visibility
- **Operation at wire-rate speed** ensures high performance and prevents bottlenecks
- **OmniFabric**, a multi-technology network fabric supporting Shortest Path Bridging (SPB), Multiprotocol Label Switching (MPLS) and Ethernet VPN (EVPN) to easily integrate with your existing infrastructure
- **Integration with third-party vendors** for smoother network interoperability



OmniSwitch 6560



OmniAccess Stellar AP1521



OmniVista Cirrus



OmniVista Network Advisor

Cutting-edge wireless technology for the digital age

The [Alcatel-Lucent OmniAccess® Stellar WLAN](#) solution delivers high-efficiency Wi-Fi. It provides outstanding performance and is simple and cost-effective to deploy and maintain.

The OmniAccess Stellar WLAN portfolio offers a full range of access points, including the latest Wi-Fi 6/6E and Wi-Fi 7 technologies. It embodies the state-of-the-art in wireless LAN networking, and is designed with:

- **Simplicity:** High-speed Wi-Fi with optimal radio coverage, yet simple to deploy and operate
- **Performance:** Distributed intelligence architecture (no need for a central controller) for high availability, high scalability and low latency
- **User-centricity:** Easy to connect to, excellent quality and a secure user experience
- **Secure IoT onboarding:** Provides automated IoT classification and connectivity, and secure IoT segmentation technology so you can use and deploy your own IoT solutions with confidence
- **Smart analytics:** Wi-Fi quality of experience (QoE), customer behavior and location analytics for a superior user experience. Advanced network analytics for proactive service assurance, efficient troubleshooting and root-cause analysis.
- **Unified management:** Native unified access for LAN and WLAN that guarantees the best quality of service (QoS)
- **Low TCO:** No central controller means less hardware, less power consumption, no single point of failure and less maintenance. Additionally, if you choose the cloud management system, licenses are sold through a software-as-a-service (SaaS) model and servers don't need to be installed on premises.





AI-powered network operations

Your business success relies on a reliable, secure and high-performing network. ALE supports this by delivering unique network management that optimizes performance, enhances observability and accelerates response to change.

We can help you design and monitor your network with maximum efficiency through advanced analytics, telemetry and the ability to process massive IoT data with minimal latency.

ALE's [OmniVista Network Management System](#) is available in both cloud-based and on premises deployment options, with identical features and product coverage:

- Cloud deployment brings simplicity and scalability
- On-premises ensures data privacy and local control

This flexible architecture allows your network to be faster, smarter and more adaptable to your evolving business needs.

Alcatel-Lucent Enterprise also leverages AI to optimize your operations:

- Enhanced observability through [OmniVista Network Advisor](#) for real-time monitoring and anomaly detection
- AI-driven automation to accelerate threat response, performance tuning and customer service
- Superior user experience through QoE metrics managed via OmniVista, ensuring consistent service quality

This AI-powered approach delivers faster response times, optimized network performance and a seamless balance between automation and human oversight, ensuring a consistently superior user experience.



Summing things up

Digital technologies that improve efficiency are being adopted by businesses at an increasing rate. To stay competitive, enterprises need to integrate the latest mobility, data analytics, cloud and Internet of Things (IoT) digital innovations into their operations, processes and computing systems. Transform your business with a network foundation that delivers the services needed to grow your business at your own pace.

Alcatel-Lucent Enterprise delivers mission-critical AI-powered and automated networks, ensuring a high-quality user experience with lower TCO.

If you wish to learn more about Alcatel-Lucent Enterprise solutions, please visit our [website](#) or feel free to [contact us](#). We would be happy to help you move forward with your upcoming network infrastructure projects.

