

Digital Age Networking

For more information, visit:
www.al-enterprise.com

Wi-Fi 7 Indoor OmniAccess Stellar 1521

Indoor mid-range Wi-Fi 7 access point

- 12.2 Gbps • 1536 clients • 36 SSID
- Tri Radio, 6 GHz 2x2:2, 5 GHz 4x4:4 and 2.4 GHz 2x2:2
- USB-C • Scanning radio • USB 2.0
- 1x10GbE + 1x1GbE • MLO • 320MHz
- 4K-QAM • DL and UL MU-MIMO
- WPA3 • Temp: 0°C to 50°C
- BLE/Zigbee integrated • TPM 2.0
- PoE powered 802.3at/bt
- Retrocompatible with previous standards



Click for more details

Wi-Fi 7 Indoor OmniAccess Stellar 1511

Indoor entry range premium Wi-Fi 7 access point

- 9.328 Gbps • 768 clients • 36 SSID
- Tri Radio, 6 GHz 2x2:2, 5 GHz 2x2:2 and 2.4 GHz 2x2:2
- USB-C • USB 2.0 • 1x 5GbE • MLO
- 320MHz • DL and UL MU-MIMO
- WPA3 • Temp: 0°C to 50°C
- BLE/Zigbee integrated
- TPM 2.0 • PoE powered 802.3at
- Retrocompatible with previous standards



Click for more details

Wi-Fi 6E Indoor OmniAccess Stellar 1451

Indoor high-end premium Wi-Fi 6E access point for increasing IoT needs

- 10 Gbps • 1536 clients • 48 SSID
- Tri radio 2.4GHz 4x4, 5GHz 8x8 & 6GHz 4x4
- Scanning radio • USB 3.0 • 10GE+10GE
- DL and UL MU-MIMO • WPA3
- Target Wake Time • Temp: 0°C to 45°C
- Max power: 49W
- Retrocompatible with previous standards
- PoE powered 802.3bt
- BLE/Zigbee integrated



Click for more details

Wi-Fi 6E Indoor OmniAccess Stellar 1431

Indoor premium Wi-Fi 6E access point that provides high-efficiency and high-performance for high client density environments.

- 4.2 Gbps • 512 clients • 16 SSID
- Tri Radio, 6 GHz 2x2:2, 5 GHz 2x2:2 and 2.4 GHz 2x2:2
- Max power: 34W • USB 3.0 • 2.5GE + 2.5GE
- DL and UL MU-MIMO • WPA3
- Target Wake Time Temp: 0°C to 45°C
- Retrocompatible with previous standards
- PoE powered 802.3bt • BLE/Zigbee integrated



Click for more details

Wi-Fi 6E Indoor OmniAccess Stellar 1411

Indoor premium Wi-Fi 6E access point that delivers excellent connectivity, coverage and performance.

- 3.6 Gbps • 512 clients • 16 SSID
- Dual Radio: 2.4GHz 2x2+5GHz 2x2 or 2.4GHz 2x2+6GHz 2x2 or 5GHz 2x2+6GHz 2x2
- USB 3.0 • 2.5GE • 2.5GE
- DL and UL MU-MIMO • WPA3 • Target Wake Time
- Temp: 0°C to 45°C • Max power: 25W
- Retrocompatible with previous standards
- PoE powered 802.3bt
- BLE/Zigbee integrated



Click for more details

Wi-Fi 6 Outdoor OmniAccess Stellar 1360

Ruggedized Wi-Fi 6 access point for outdoor high-density environments

- 2.3 Gbps • 1024 clients • 16 SSID
- 2.23 Kg • DPI • IP67 rated
- 4 radios - 1 dedicated to scanning
- WPA3 • DL and UL MU-MIMO
- Target Wake Time
- Temp: -40°C to 65°C
- Retrocompatible with previous standards
- Max power: 70W
- PoE powered 802.3bt/at
- BLE integrated



Click for more details

Wi-Fi 6 Indoor OmniAccess Stellar 1351

Outstanding bandwidth and speed for very demanding environments

- 10 Gbps • 1536 clients • 24 SSID • 1200 g
- DPI • WPA3 • Tri radio 2.4GHz and Dural 5Ghz
- 1 radio dedicated to scanning
- DL and UL MU-MIMO • Target Wake Time
- Temp: 0°C to 45°C • Max power: 60W
- Retrocompatible with previous standards
- PoE powered 802.3bt • BLE/Zigbee integrated



Click for more details

Wi-Fi 6 Indoor OmniAccess Stellar 1331

Wi-Fi 6 premium mid-range access point for larger enterprises with intensive Wi-Fi usage

- 3, 55 Gbps • 1024 clients • 32 SSID • TWT
- 985 g • DPI • Dual Radio DL & UL MU-MIMO
- 1 radio dedicated to scanning • Temp: 0°C to 45°C
- PoE powered 802.3bt/at • BLE/Zigbee integrated
- Retrocompatible with previous standards
- Max power: 23W



Click for more details

Wi-Fi 6 Indoor OmniAccess Stellar 1320

Wi-Fi 6 access point for indoor high-density environments

- 3 Gbps • 1024 clients • 32 SSID
- 700 g • DPI • UL2043
- 4 radios - 1 dedicated to scanning
- WPA3 • DL and UL MU-MIMO
- Target Wake Time • Temp: 0°C to 50°C
- Retrocompatible with previous standards
- Max power: 18W • PoE powered 802.3at
- BLE integrated



Click for more details

Wi-Fi 6 Indoor OmniAccess Stellar 1311

Wi-Fi 6 premium entry-level for indoor; cost-effective and versatile for all type of enterprises

- 1.77 Gbps • 512 clients • 16 SSID • 582 g
- DPI • 4 radios - 1 dedicated to scanning
- WPA3 • DL and UL MU-MIMO
- Target Wake Time • Temp: 0°C to 45°C
- Retrocompatible with previous standards
- Max power: 19.1 W • PoE powered
- 802.3af/at • BLE integrated



Click for more details

Wi-Fi 6 Indoor OmniAccess Stellar 1301

Wi-Fi 6 access point, basic entry-level for indoor; ideal for small and medium enterprises

- 1.77 Gbps • 512 clients • 16 SSID
- 574 g • DPI • Dual radio • WPA3
- DL and UL MU-MIMO
- Target Wake Time • Temp: 0°C to 45°C
- Retrocompatible with previous standards
- Max power: 13.1 W
- PoE powered 802.3af



Click for more details

Wi-Fi 6 Indoor OmniAccess Stellar 1301H

Wi-Fi 6 indoor designed for vertical industries and teleworkers

- 1.77 Gbps • 1024 clients • 32 SSID
- 320 g • DPI • Dual Radio • WPA3
- DL & UL MU-MIMO • TWT
- Temp: 0°C to 45°C
- Max power: 12.7 W
- PoE powered 802.3at/af
- BLE/Zigbee integrated
- Retrocompatible with previous standards



Click for more details

Distributed Wi-Fi Control Architecture

Alcatel-Lucent Enterprise OmniAccess Stellar products embed WLAN control in access points (APs) and eliminating the need for physical centralised controllers.

ALE smart and advanced APs are managed as a single system or cluster, in a distributed and coordinated manner. Distributed architecture from ALE delivers the best performance and scalability, and ensures high availability, with operational simplicity and low Total Cost of Ownership (TCO).

- Integrated WLAN controller
- Coordinated intelligence
- Lower CAPEX & OPEX
- Improved resiliency
- No traffic bottleneck and decreased latency
- Better scalability

Click for more details

OmniFabric: Secure Network Fabric

OmniFabric is a multi-technology network fabric ensuring end-to-end security in a Zero Trust Network architecture with automated segmentation for both IT and OT environments.

- A unique solution offering embedded, automated IoT device detection and segmentation.
- Multi-Technology Integration: supports SPB, MPLS and EVPN within a single operating system (AOS) ensuring superior flexibility and performance.
- Ideal for sectors such as healthcare, university, smart buildings, critical infrastructure, energy plants and transportation networks.

Click for more details

Premium access OmniSwitch 6870

Advanced 24/48 ports 1G/Multi-gig and 25G switches for campus and Data Center networking

- All Multi-gig ports on PoE models, comprehensive 2.5G/5G/10G models to select
- 802.3bt PoE up to 95W per port and 3.3 kW PoE budget • Flexible PSU Load-Sharing PoE
- PoE and non-PoE models can stack together • Various uplink speed up to 200G
- OmniFabric ready • 256-bit MACsec on all ports • Telemetry • SPB • VxLAN
- Virtual chassis • QoS • IPv4/v6 • VRF • Advanced routing • Multicast • UNP



Click for more details

Premium access OmniSwitch 6860N

Advanced 24/48 ports 1G/Multigig switch for campus and Data Center networking

- PoE+ and non-PoE models • Up to 95W PoE and 3.4 kW PoE budget
- VxLAN • SPB • iFab • Virtual chassis • Automatic VLAN
- Context-based QoS • JTIC • IPv4/v6 • FIPS • VRF • Advanced routing
- Multicast • EAL-2/NDcPP • UNP • Smart analytics
- Application analytics • MACsec encryption



Click for more details

Advanced access OmniSwitch 6570M

Advanced 12/28 ports 1G/10G switch for Enterprise and Service Provider Networks

- Metro Ethernet Services enabled • Virtual chassis
- Automatic VLAN • Advanced QoS • IPv4/v6
- Static/Dynamic routing • Multicast • UNP
- EAL-2/NDcPP • CE 3.0 certified
- MACsec encryption



Click for more details

Advanced access OmniSwitch 6560/E

Cost-effective Layer 3 24/48 ports Multigig access switch for large IoT-based and Wi-Fi 6/7 networks

- 802.3bt PoE • PoE+ and non-PoE models • 2x20G virtual chassis ports
- Fiber SFP+ ports • Modular load-sharing power supplies • Up to 95W/port
- IoT profiling enablement • Advanced QoS • IPv4/v6 • Static/Dynamic routing
- UNP • MACsec encryption • Automatic VLAN • Context-based QoS
- Virtual chassis



Click for more details

Value access OmniSwitch 6360

Advanced Layer 2+ 10/24/48 ports 1Gb for classroom, campus and small/branch enterprise

- PoE+ and non-PoE models • 10G SFP+ uplinks
- Static IPv4/v6 routing • UNP • Fiber SFP ports
- IoT enablement • Fanless (10/24 ports) • Virtual Chassis
- Perpetual/Fast PoE • Multigig/HPoE on P48X model



Click for more details

Ruggedized OmniSwitch 6865

Advanced Layer 3 fanless Ethernet switches designed to operate in the harshest industrial environments

- PoE+ and non-PoE models • SFP+ uplinks • SPB Virtual chassis
- Temp: -40°C to 75°C • EAL-2/NDcPP • Advanced stacking and routing
- VRF • Multicast • IPv4/v6 • JTIC • UNP • Automatic VLAN
- Advanced L3 • Fast / Perpetual • High surge tolerance • 802.3bt PoE
- HPoE up to 75W/port • IoT enablement • FIPS 140-2 • iFab
- Certified for: DNV MIL Railway Electric substation TAA NEMA-TS2



Click for more details

Ruggedized and high-temperature OmniSwitch 6465/6465T

Compact hardened fanless 6/12/28 ports Gigabit Ethernet switches for industrial applications

- PoE+ and non-PoE models • 802.3bt PoE
- HPoE up to 60W/port • Instant/continuous PoE
- Network automation • Virtual chassis • High surge tolerance
- DIN mountable • MACsec encryption • Zero touch provisioning
- IoT enablement • Support IEEE 1588v2 PTP • Disaster recovery
- Extended temperature ruggedized



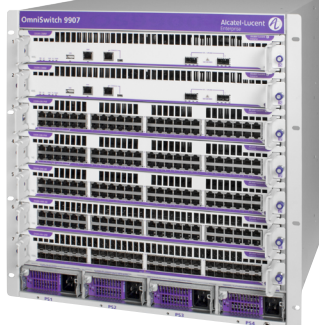
More details on 6465

More details on 6465T

Modular core switch OmniSwitch 9900

High-density chassis for core campus and Data Center networks

- 7 Slot modular chassis • 25.6 Tb/s aggregated switching capacity (with two OS9907-CFM2) • Up to 10,800W of PoE budget
- Virtual chassis • VRF • Advanced routing • MACsec
- Multicast • IPv4/v6 • FIPS 140-2 Core network and DC Fabric at 1G/10G/25G/40G/100G
- Programmability: Python, RESTful API, OpenStack
- EAL-2/NDcPP • JTIC • SPB • UNP



Click for more details

Stackable core switch OmniSwitch 6900

High-performance switch for core campus and Data Center networks

- 1U switches
- Multiple fixed configurations of 1/10/25/40/100G ports
- Virtual chassis • Advanced routing • VRF • Multicast
- IPv4/v6 • JTIC • ISSU • SPB • UNP
- Programmability: SDN, OVSDB, OpenStack, Python, Rest API, SSH
- FIPS 140-2 • EAL-2/NDcPP • MACsec



Click for more details

SMB and Websmart access OmniSwitch 2260/2360

Cost Effective 8/24/48 ports stackable, websmart Gigabit Ethernet Switch

- Virtual chassis • Standalone
- PoE+ and non-PoE models
- Static IPv4/v6 routing • Fiber SFP Ports
- Fanless (10/P10/24 ports)
- Perpetual/Fast PoE • 802.1X/MAC Auth
- Advanced QoS and ACLs
- 10G SFP+ uplinks on "X" models



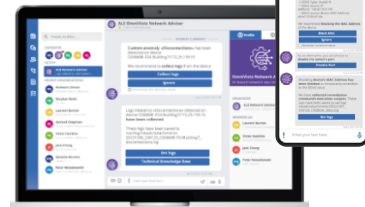
Click for OS2260 details

Click for OS2360 details

Alcatel-Lucent OmniVista® Network Advisor

Network Advisor is an AI-powered IT companion that eases network teams' daily operations

- Detect network issues
- Simplify troubleshooting
- Accelerate security threat detection, reaction & mitigation
- Benchmark network performance
- Get alerts on possible provisioning errors and proposal on corrections
- Get a comprehensive picture of the health of the network

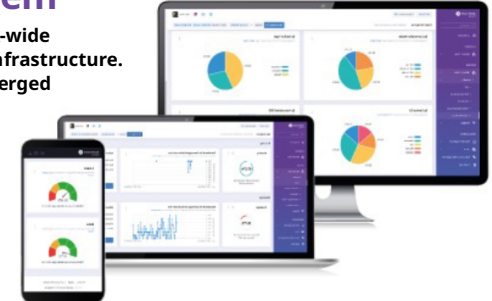


Click for more details

Alcatel-Lucent OmniVista® 2500 Network Management System

Unified management and network-wide visibility for your LAN and WLAN infrastructure. Includes a full set of tools for converged campus networks and datacenters

- Automated reporting
- Full HTML 5 web-based client
- Monitor and manage end-to-end LAN and WLAN infrastructures



Click for more details

Alcatel-Lucent OmniVista® Cirrus Network Management

Cloud-based network management for LAN and WLAN

- Web-based user interface
- Advanced BYOD
- Multi-tenant support
- Multi-customer management
- Subscription-based offer
- IoT visibility and inventory
- Lifecycle management



Click for more details

OmniSwitch VMS Plugin for Milestone solutions

Boost operational efficiency and improve video surveillance infrastructure security.

- It allows users to create, modify, and delete ALE switches connected to cameras managed by the VMS
- Up to 70% of camera problems can be resolved remotely by the VMS operator
- Enhances the efficiency and responsiveness of the camera management system
- Enables you to view cameras connected to the switchboards and provide real-time status of the switches and ports
- Allows resetting of a camera and locking the MAC address to a port directly from the smart client



Click for more details

Asset Tracking

OmniAccess® Stellar Asset Tracking

It provides smart connection to assets, so you can locate equipment and people in real-time, optimizing operations and reducing costs.

- Real-time location & geofencing
- Asset tracking & asset management
- Automated & push button security alerts
- Contact tracing & contact history
- People location & people flow
- Equipment maintenance scheduling
- Workflow optimization
- APIs for 3rd party integration



Click for more details

Network as a Service

Network as a Service by Alcatel-Lucent Enterprise

It is a new way for businesses to purchase network infrastructure—hardware, licenses, applications, and management tools—with agile life cycle services through subscriptions. This is a modular offer to meet your business needs.

- Reduce time to benefit
- Quickly adapt to business needs
- Maximum agility and scalability
- Free up IT Staff with improved network operations
- Predictable costs for your network infrastructure
- All-inclusive Support Offer

Click for more details

Powering digital connections



Networks built for you

In a constantly evolving world, it is crucial to **keep up with digital transformation**. Alcatel-Lucent Enterprise network solutions enable organisations to evolve to an infrastructure that supports connectivity for digital applications, IoT and user devices, while supporting workflow optimisation and differentiated products and services, resulting in improved customer and employee satisfaction.

For **all industries, automation is key**:

- Automate **mission-critical network operations** and improve user experience
- Scale up digitalisation with **secure IoT onboarding** and management
- Accelerate transformation with **automated workflows**

ALE Network Fleet Supervision

Network inventory & Support visibility made easy for Customers and Fleet Managers



OmniSwitch® plugin



Boost operational efficiency and improve network security

- **Enhance network security and efficiency** with the OmniSwitch Milestone Plugin, eliminating stuck cameras and reducing camera-related issues by over 90%.
- **Secure** your network by locking ports to cameras and streamline management with a single interface.
- **Empower** video operations users for quick troubleshooting and free up IT resources for strategic tasks by offloading operational responsibilities.

Internet of Things

Modernised and digitalised networks

Efficiently onboard devices while ensuring network protection facilitated by automated workflows.

Alcatel-Lucent Enterprise IoT solutions provide **seamless connectivity and data management** within network in all industries.

- Discover and classify: recognising and categorising each connected object
- Virtual segmentation: ensuring both functionality and security
- Continuous monitoring: keeping an inventory to take immediate action in cases of abnormal behavior



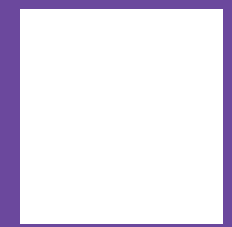
Shortest Path Bridging (SPB)

Simplifying networks by providing scalability, multi-tenancy support, dynamic service provisioning, micro-segmentation, and rapid convergence, resulting in enhanced performance and decreased network intricacy. Best solution for mission critical and a secured videosurveillance.



Distributed Wi-Fi control architecture

A unified management and distributed control solution in wireless deployments. Providing a highly available, scalable, and easy to manage wireless network.



Advanced Security

- Zero-Trust approach to keep unsecured devices and content out of the system.
- Micro-Macro-segmentation : the components are managed and should be able to react and reconfigure as needed to respond to threats or changes in the workflow.

Autonomous Network

Simplify IT operations

The ALE Autonomous Network architecture provides automated service provisioning between users, devices, and applications and ensures a robust network infrastructure by automating moves, adds, and changes, reducing the time and effort it takes to maintain and operate a network.

The ultimate goal is to improve the **user-experience** thanks to a single network management, providing **unified service management** and network-wide visibility, improving **IT efficiency** and **business agility**.



OmniVista Network Advisor

AI-based network operations companion

- **Real-time** and continuous network monitoring
- **Alerting** system
- **Automated remediation**
- **Fix network issues** instantly and remotely
- **Detect and mitigate** security threats within seconds
- **Simplify troubleshooting**
- **Minimise downtime**