

AD51 DECT HEADSET MONAURAL
AD52 DECT HEADSET BINAURAL
AD1 DECT HEADSET BASE STATION
AD2 DECT HEADSET USB DONGLE

ALE Headset Setup Tool User Manual

**Table of contents**

1	Introduction	3
1.1	References	3
1.2	Abbreviations	3
2	Installation	4
3	Configuration options	5
3.1	Connecting headset to the setup tool	5
3.2	Device settings	7
3.2.1	General tab	7
3.2.2	Audio tab	9
3.2.3	Audio prompt tab	10
3.2.4	Registrations tab	11
3.2.5	Menu button	12
4	Firmware update	13
5	Application settings	14
5.1	Software Update tab	14
5.2	Softphone tab	15
6	Help / About	16

www.al-enterprise.com The Alcatel-Lucent name and logo are trademarks of Nokia used under license by ALE. To view other trademarks used by affiliated companies of ALE Holding, visit: www.al-enterprise.com/en/legal/trademarks-copyright. All other trademarks are the property of their respective owners. The information presented is subject to change without notice. Neither ALE Holding nor any of its affiliates assumes any responsibility for inaccuracies contained herein.

© Copyright 2025 ALE International, ALE USA Inc. All rights reserved in all countries.

1 Introduction

This document describes the configuration, management, operation, and maintenance of the AD5x headsets series using the ALE Headset Setup Tool.

1.1 References

Readers of this user guide may find additional information and supporting specifications in the following documents.

Reference		Name
1	8AL91482ENAA	ADX DECT Headset User manual
2	8AL91486ENAA	ADX DECT Headset Firmware Update

1.2 Abbreviations

Abbreviation	Description
AEI	EHS Standard (Additional Equipment Interface)
BT	Bluetooth®
DECT	Digital Enhanced Cordless Telecommunications
DHSG	EHS Standard (Drahtlose Hör-Sprech-Garnitur, Wireless Headset Interface)
EA40	EHS Standard (Alcatel-Lucent proprietary headset interface)
EHS	Electronic Hook Switch
ENC	Environmental Noise Cancellation
LED	Light Emitting Diode
USB	Universal Serial Bus

2 Installation

Access Alcatel-Lucent Enterprise Portal to find the latest ALE Headset Setup Tool version: [My Portal](#).

To install the ALE Headset Setup Tool, run the installation file, and follow the instructions on the screen.

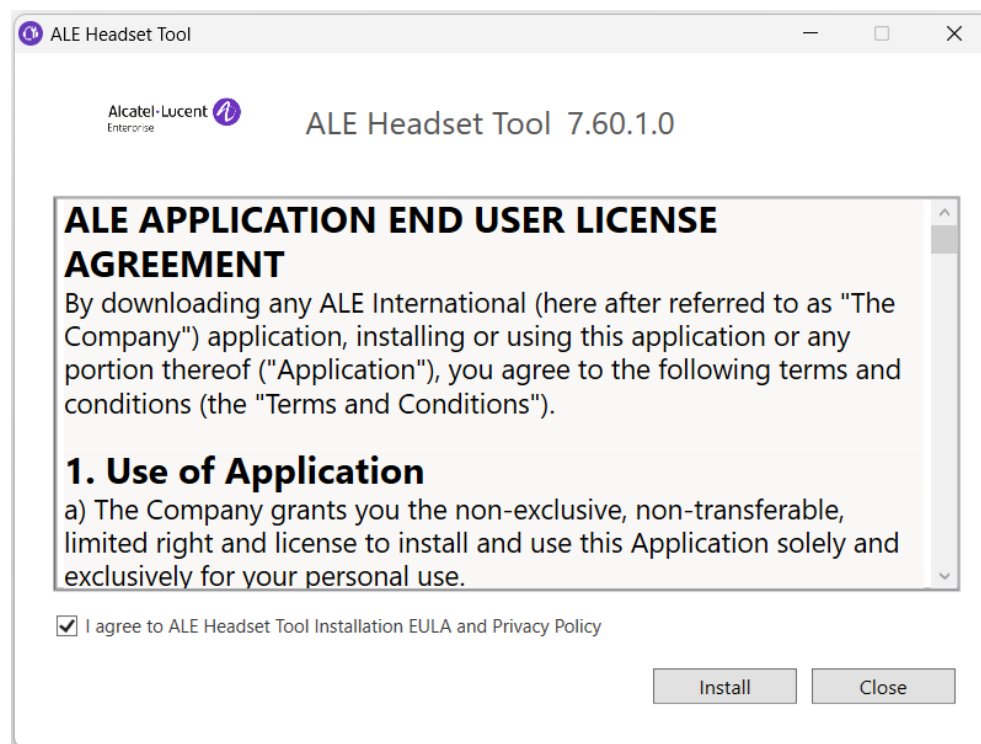


Figure 1: User license agreement

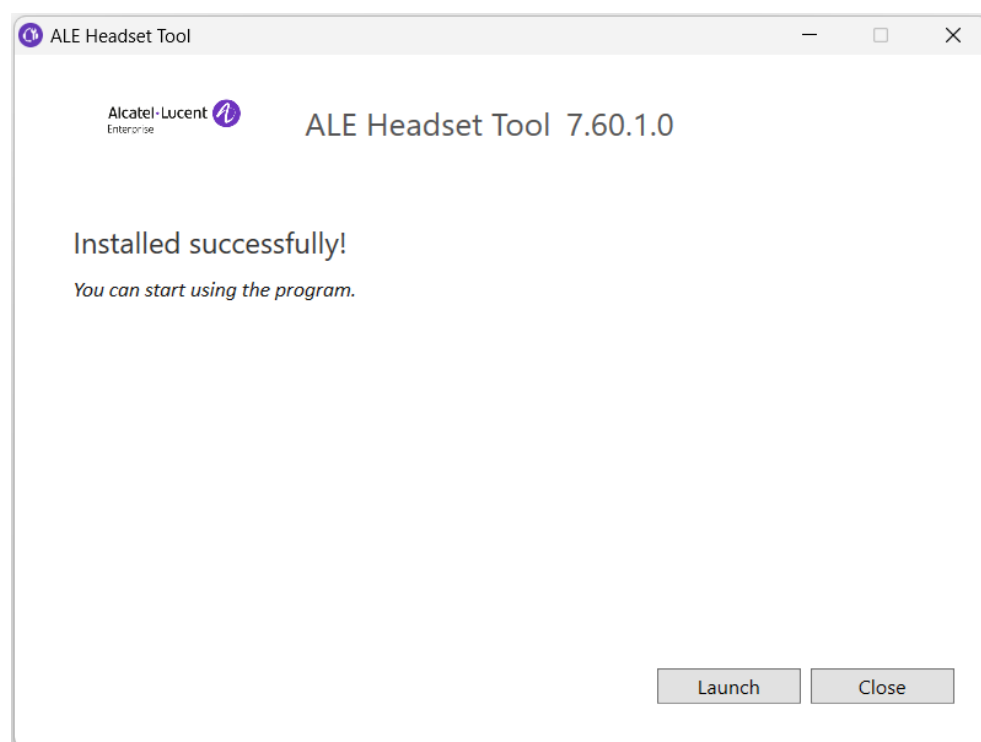


Figure 2: Launch ALE Headset Setup Tool

3 Configuration options

This section describes the different configuration options for the headset, the base and the dongle using the ALE Headset Setup Tool.

The ALE Headset Setup Tool will display devices based on their connection status as follows:






1	2	3	4	5
Headset alone	Base alone	Dongle alone	Base with connected headset(s)	Dongle with connected headset
				
AD51 Professional Wireless Multi-interface Mono Headset	AD1 Multi-interface Base	AD2 DECT USB-A Dongle	AD1 & AD51 Professional Wireless Multi-interface Mono Headset & Base	AD2 & AD51 Professional Wireless Multi-interface Mono Headset & Dongle
USB-C cable	USB-C cable	USB-A	Base : USB-C cable Headset: on the cradle	Dongle: USB-A Headset: USB-C

Table 1: Device connection status

Options depend on the connected devices and connection status.

3.1 Connecting headset to the setup tool

The ALE Headset Setup Tool will automatically detect the device when it is connected. For information on how to connect the headset, please refer to reference the DECT Headsets user manual (ref 1).

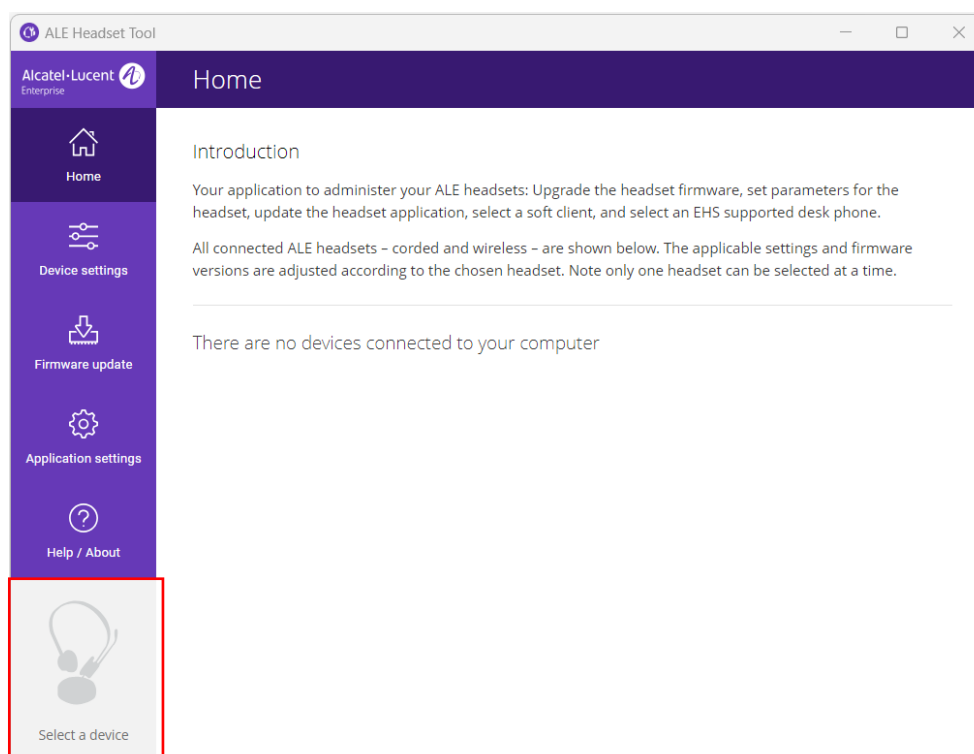


Figure 3 : No headset connected

When the headset is connected, the ALE Headset Setup Tool shows the connected headset. If the ALE Headset Setup Tool is opened before the headset is connected, wait for a few seconds to give the setup tool time to detect the headset.

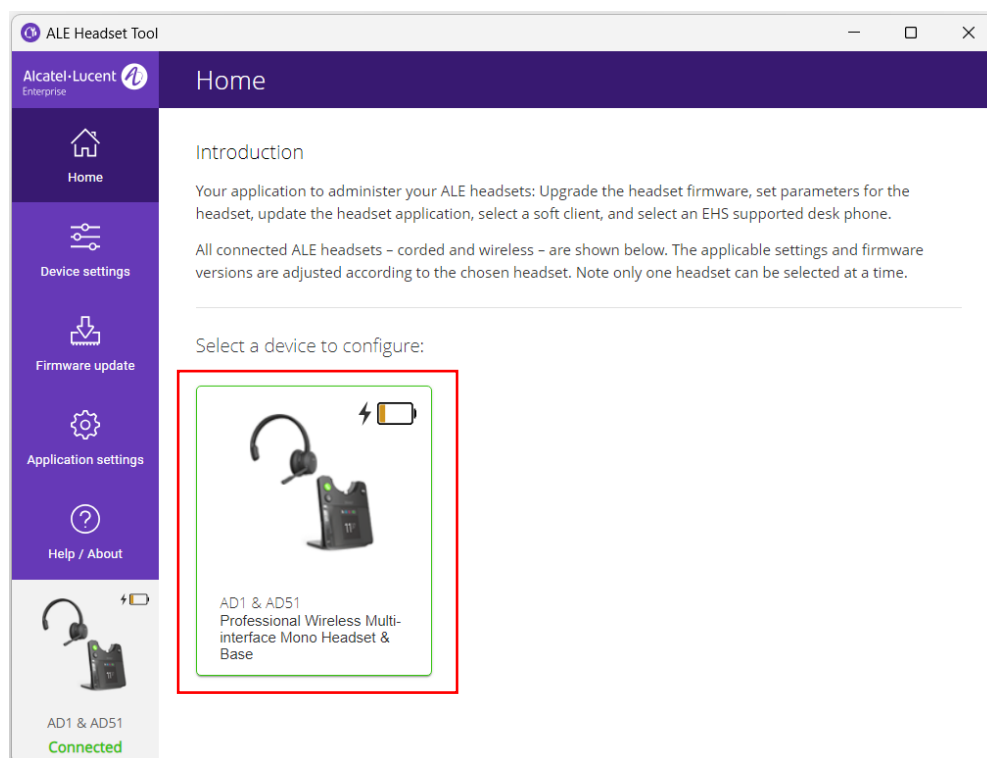


Figure 4: Connected device

Once a device is selected, it will be highlighted inside a green frame. That makes it easier to differentiate the chosen device when multiple devices are present.

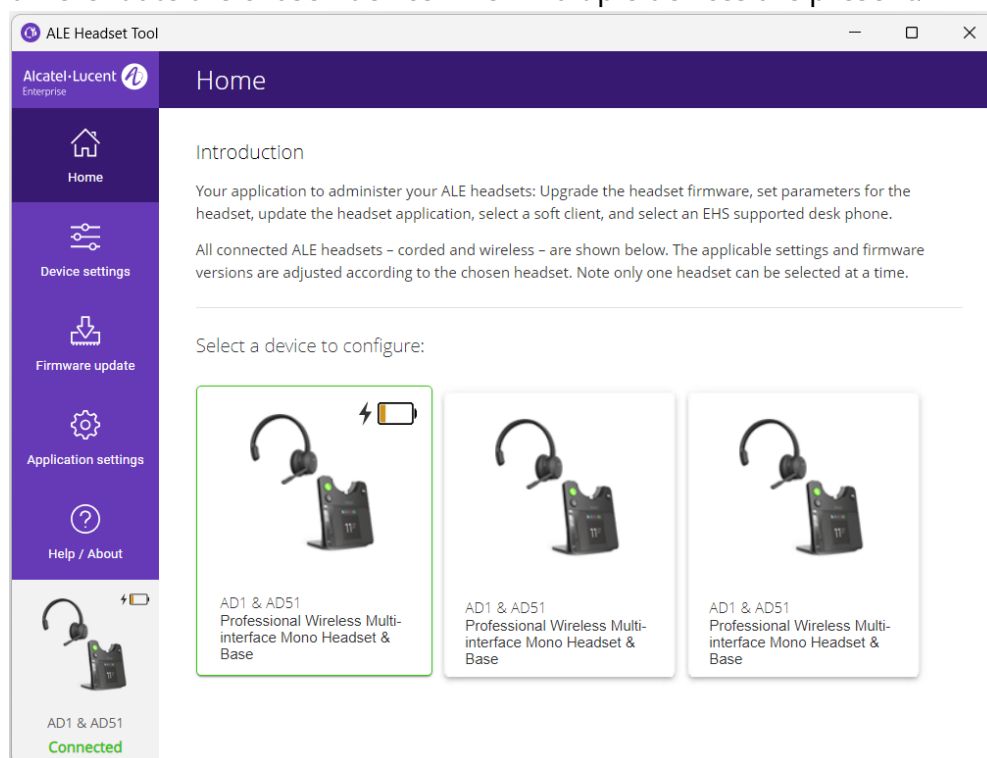


Figure 5: Multiple devices connected

3.2 Device settings

On the **Device settings** page, it is possible to adjust the different settings for the headset and the base.

Please note, the Device settings options can vary from model to model.

3.2.1 General tab

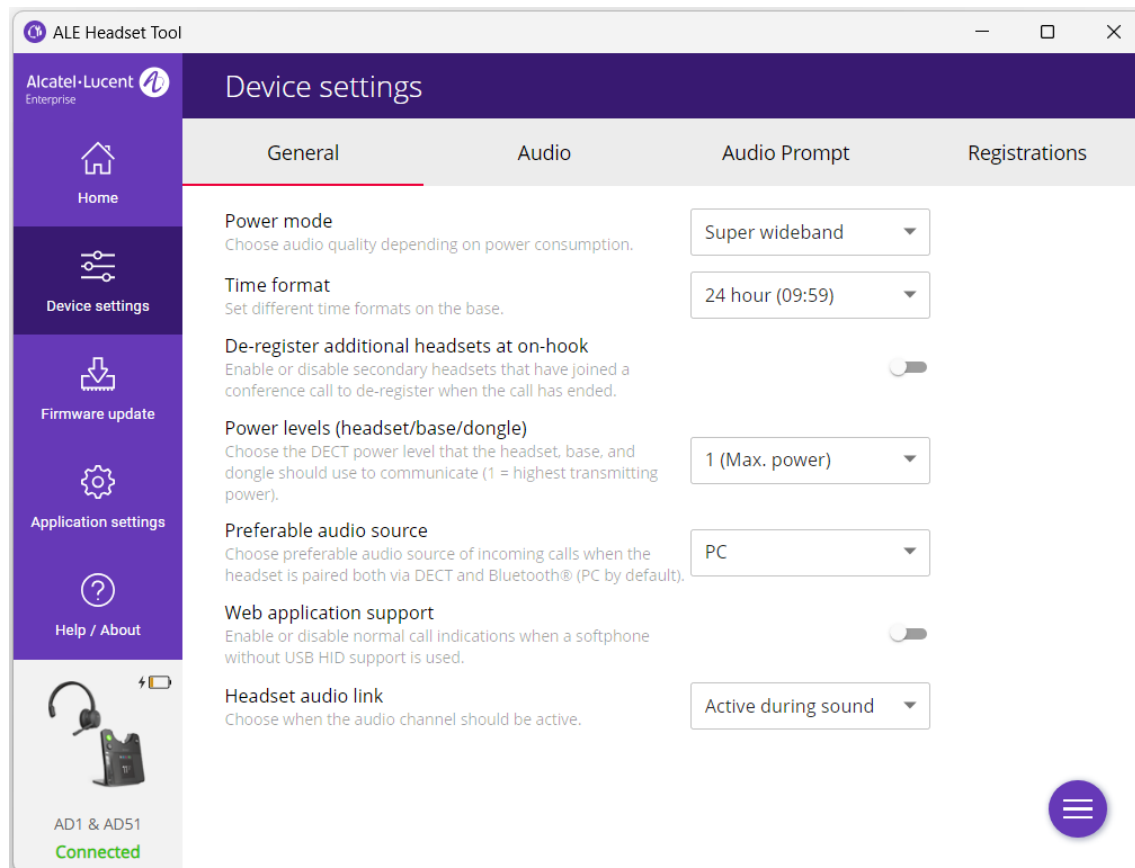


Figure 6: General settings

<i>Power mode</i>	Choose audio quality depending on power consumption. <ul style="list-style-type: none"> • Normal: Audio quality suitable for phone call with balanced power consumption • ECO: Maximum power-saving audio quality with no LED notification, and adaptive RF is deployed • Super wideband: Best audio quality in audio playback and call
<i>Time format</i>	Set different time formats on the base.
<i>De-register additional headsets at on-hook</i>	Enable or disable additional headsets that have joined a conference call to de-register when the call has ended. Possible settings: On/Off

<i>Power levels (headset/base/dongle)</i>	<p>Choose the DECT power level that the headset base and dongle should use to communicate.</p> <p>Level 1 - 6 (1 = highest transmitting power)</p> <p>The lower the transmitting power, the longer battery time.</p> <p>Note: in environments where many headsets are present, it can be necessary to use higher transmitting power.</p>
<i>Preferable audio source</i>	<p>Choose preferable audio source of incoming calls when the headset is paired both via DECT and Bluetooth® (PC by default).</p> <p>Possible settings: PC (default)/Bluetooth®</p>
<i>Web application support</i>	<p>Enable or disable normal call indications when a softphone without USB HID support is used.</p> <p>When a softphone without USB HID support is used, this feature allows for normal call notifications: headset will show a busy light and the base will show active call screen.</p> <p>Note: in this case, headset call controls will not be available. Mute button will only mute the headset but will not affect the softphone itself, i.e. if the microphone is in use, the system will interpret that as the softphone is being used.</p>
<i>Headset audio link</i>	<p>Choose when the audio channel is active.</p> <p>Could either be "Active during call" or "Always active". This feature allows the user to keep the DECT link between the headset and the headset base/dongle continually active. Note: The permanent radio link will be disabled if the user places the headset in a charger on a base or connects it via a USB cable to the PC. In those cases, it will switch to normal radio-link mode.</p>

Table 2: Description of general settings

3.2.2 Audio tab

The Audio tab lets the user control the audio settings for the headset and the base. Most of the settings can also be set from the menu of the base.

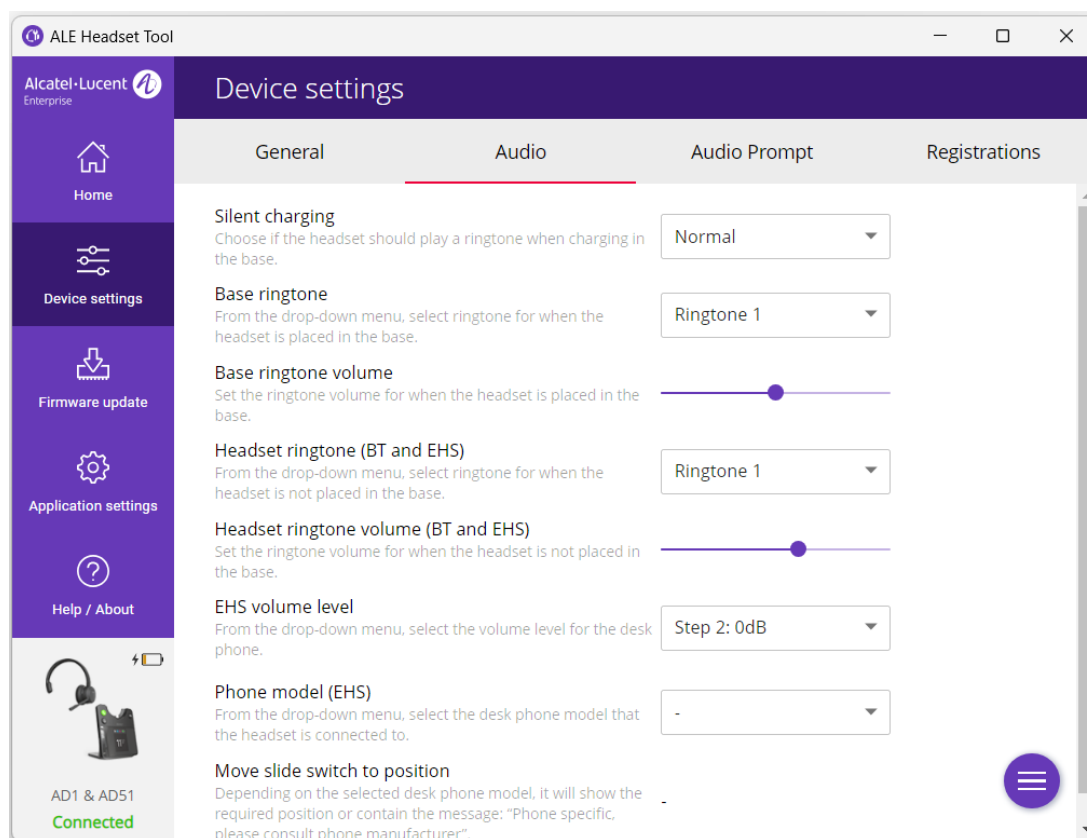


Figure 7: Audio settings

<i>Silent charging</i>	Choose if the headset should play a ringtone when charging in the base. <ul style="list-style-type: none"> • Silent: headset will not play a ringtone when placed in the charger. • Normal: headset will play a ringtone when placed in the charger.
<i>Base ringtone</i>	Select a ringtone when the headset is placed in the base. Five different ringtones are available.
<i>Base ringtone volume</i>	Set the ringtone volume when the headset is placed in the base. Steps 1 - 6
<i>Headset ringtone (BT and EHS)</i>	Select a ringtone when the headset is not placed in the base. Five different ringtones are available
<i>Headset ringtone volume (BT and EHS)</i>	Set the ringtone volume when the headset is not placed in the base. Steps 1 – 6.
<i>EHS volume level</i>	Select the volume level of the desk phone.
<i>Phone model (EHS)</i> Available for desk phones other than ALE DeskPhones	Select the desk phone that the headset is connected to from the drop-down menu. Besides phone models, there are three EHS standards that can be chosen: DHSG (Drahtlose Hör-Sprech-Garnitur, Wireless Headset Interface), EA40 (Alcatel-Lucent proprietary headset interface), and AEI (Additional Equipment Interface).
<i>Move slide switch to position</i>	Depending on the selected desk phone model, it will show the required position or contain the message: "Phone specific, please consult phone manufacturer".

Table 3: Description of audio settings

3.2.3 Audio prompt tab

The Audio prompt tab allows the user to adjust the audio prompt settings.

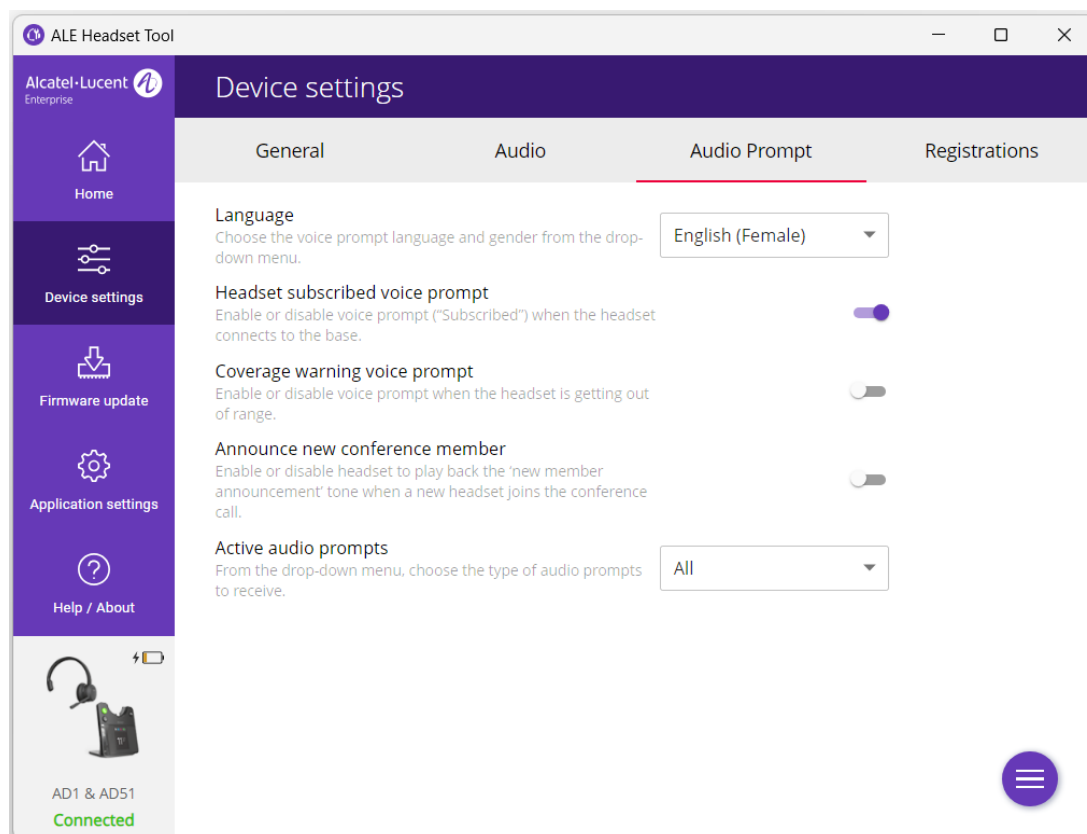


Figure 8: Audio prompt settings

<i>Language</i>	Choose the voice prompt language and gender.
<i>Headset subscribed voice prompt</i>	Enable or disable voice prompt “Subscribed” when the headset connects to the base. Possible settings: On/Off
<i>Coverage warning voice prompt</i>	Enable or disable voice prompt when getting out of range. Possible settings: On/Off
<i>Announce new conference member</i>	Enable or disable headset to play back the ‘New member announcement’ tone when a new headset joins the conference call. Possible settings: On/Off
<i>Active audio prompts</i>	Choose the type of audio prompts to receive. ‘All’ will play all audio prompts. ‘Warning’ will play audio prompts categorized as Warning or Crucial. ‘Status’ will only play audio prompts categorized as Status or Crucial. ‘Silent’ will only play Crucial audio prompts.

Table 4: Description of audio prompt settings

3.2.4 Registrations tab

The Registration tab shows which devices are connected.

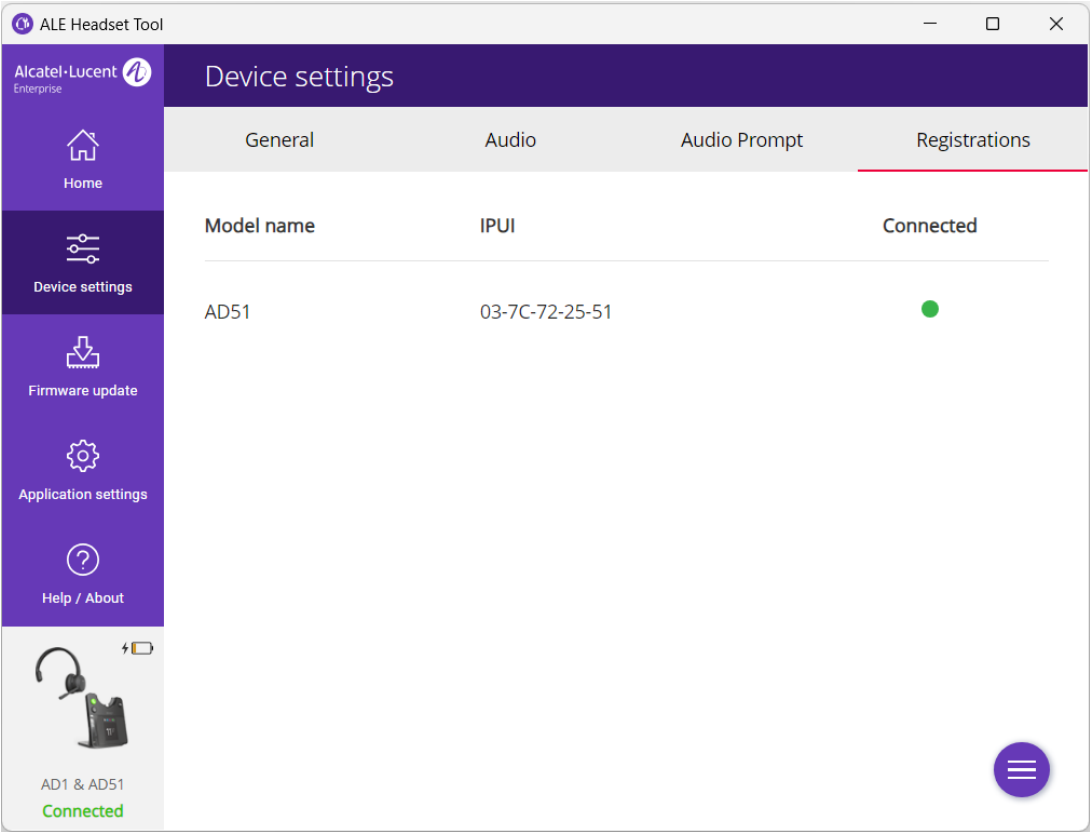


Figure 9: Registration

<i>Model name</i>	Model of the device.
<i>IPUI</i>	IPUI number of the device.
<i>Connected</i>	Connection state.

Table 5: Description of registration settings

3.2.5 Menu button

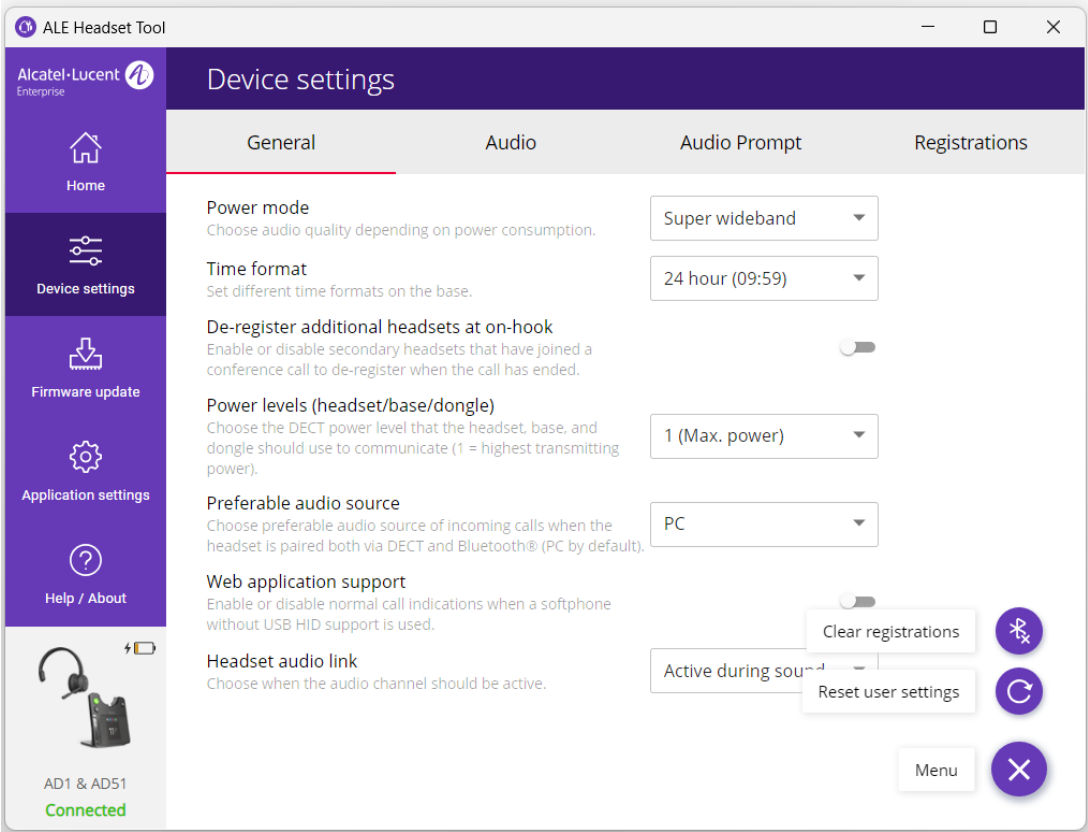


Figure 10: Menu

	<i>Menu</i>	Click on this icon to open or close the menu.
	<i>Clear registrations</i>	Connected devices will be de-registered.
	<i>Reset user settings</i>	It will change all settings back to default.

Table 6: Menu button

4 Firmware update

Please refer to the ADX DECT Headset Firmware update installation manual for more details about the firmware update (ref 2).

On the Firmware update page, all device details are displayed.

Select a firmware by clicking the **"Browse"** button and click the **"Install"** button.

Note: Do not disconnect the headset during firmware update.

Note: Headset will not be usable during firmware update.

Note: AD5X headsets, AD1 base and AD2 dongle must upgrade to the same firmware version to avoid any compatibility issues. It is recommended to upgrade the headset first, then upgrade AD1 base and AD2 dongle. It is recommended to use USB cable on PC to upgrade the headset. The headset can also be upgraded via the AD1 base (use OTA file). If used in this way, the duration of upgrade via the AD1 takes much longer than an upgrade via a USB cable connected to the PC.

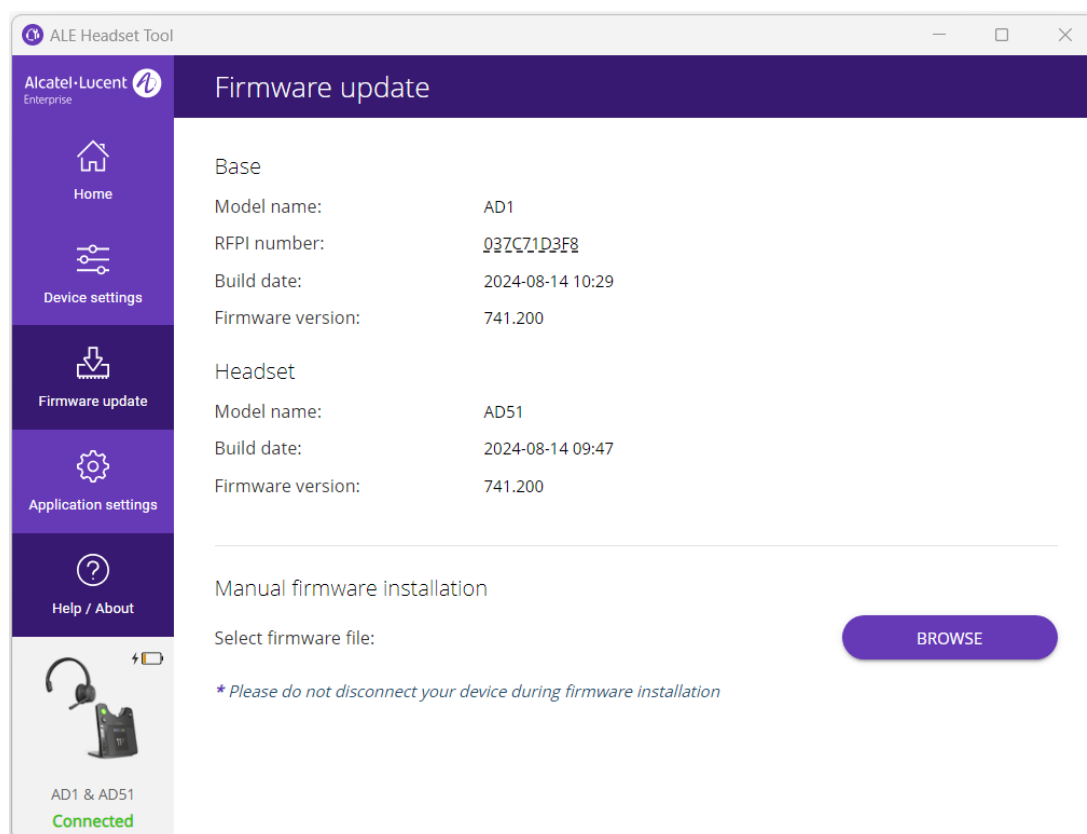


Figure 11: Firmware update

5 Application settings

The Application settings page includes a **Software Update** tab and a **Softphone** tab.

5.1 Software Update tab

The ALE Headset Setup Tool version is displayed on this page.

The update server feature is reserved for future use and will enable a software update from a provisioning server. Please refer to the ADX DECT Headset Firmware update installation manual for more details on updating the ALE Headset Setup Tool (ref 2: 8AL91486ENAA).

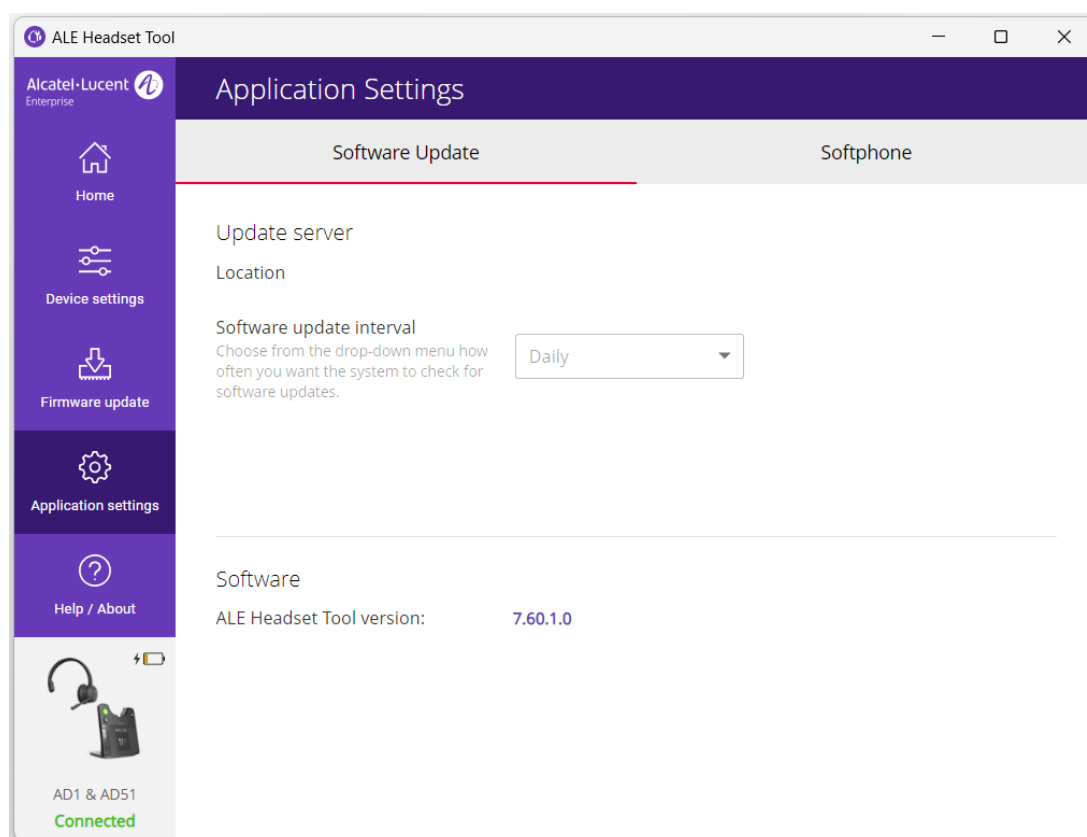


Figure 12: Application settings – General tab

Location	Future use.
Software update interval	Future use.
Software	ALE Headset Setup Tool version.

Table 7: Softphone settings description

5.2 Softphone tab

The AD1 base and AD2 dongle provide support for various software clients or applications and, as such, it can be used with both PC Windows and macOS. This means that the base or dongle combined with one of the headsets supports the audio and USB API of the software clients or applications, such as:

- Alcatel-Lucent Enterprise SoftPhone.
- Alcatel-Lucent Enterprise Rainbow (application mode).
- Alcatel-Lucent IP Desktop Softphone.
- Microsoft Teams.

Depending on the configuration, other software clients and applications are supported and need to be enabled.

The Softphone tab lists the connection possibilities, and the user can enable/disable the different options. A green dot is displayed if the headset is connected to a specific softphone. There is no limit on how many softphones the headset can be connected to.

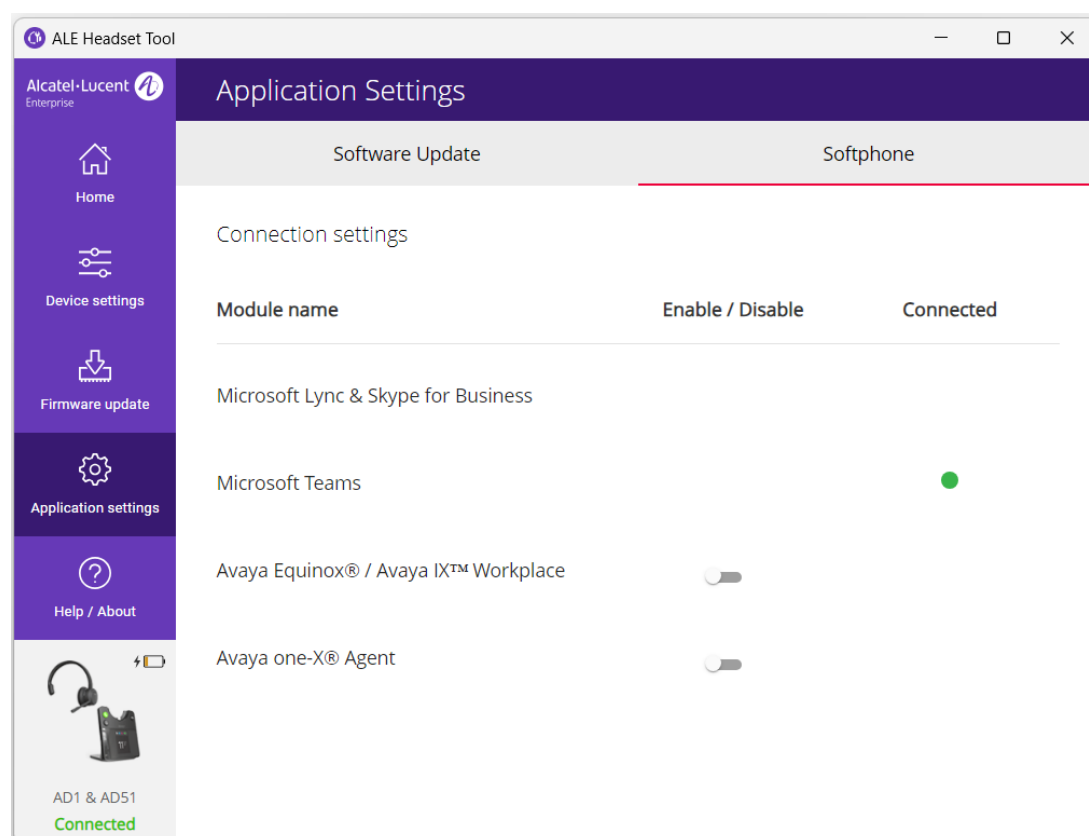


Figure 13: Application settings – Softphone tab

<i>Model name</i>	Name of the softphone.
<i>Enable/Disable</i>	Enable/disable the specific softphone. Softphones that are not installed/detected will be grayed out.
<i>Connected</i>	If the softphone is connected, a green dot will be displayed.

Table 8: Softphone settings description

6 Help / About

On the Help / About page, the user will find information about the license agreement and other legal information.

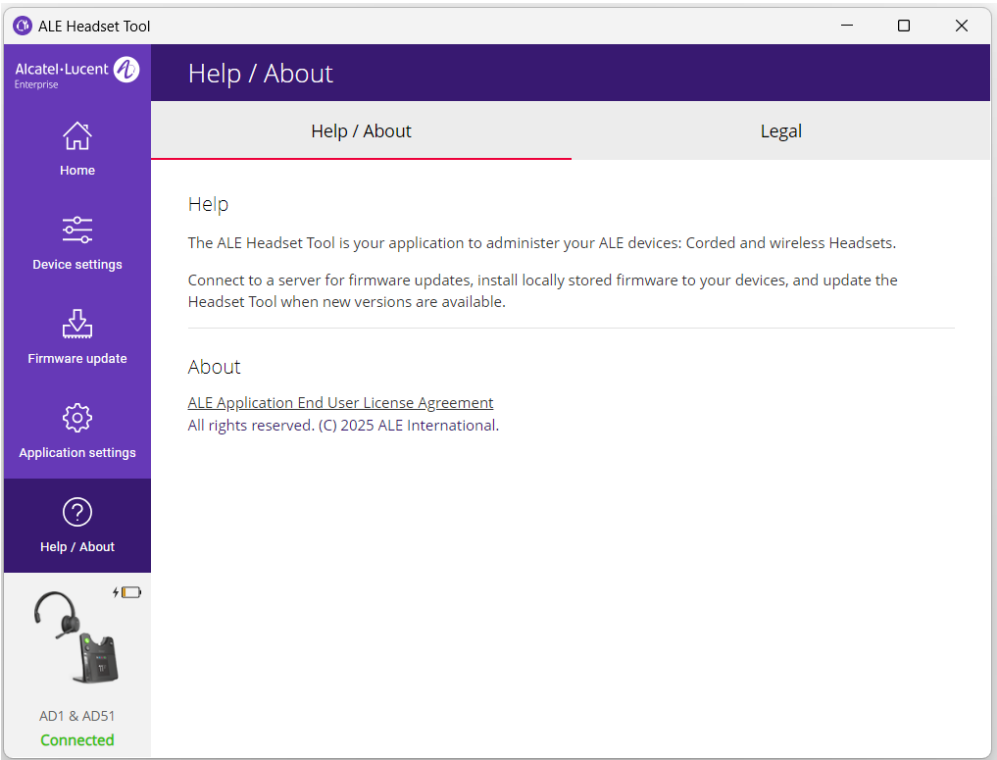


Figure 14: Help / About

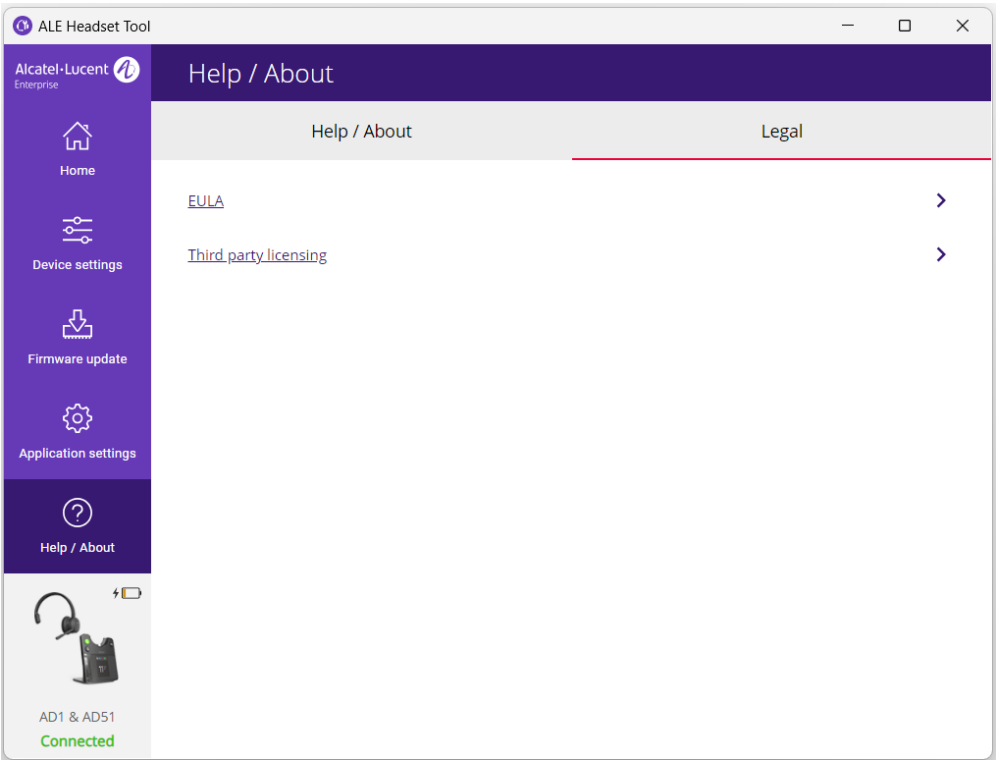


Figure 15: Legal